



MIAMI CAMPUS UPDATES

OFFICE OF THE CHANCELLOR

FALL 2021



What's Inside

Campus-Wide Renovations
Technology Upgrades
Academic Updates
Web Resources and Links
Grants and Scholarships

WE HAVE BEEN BUSY!

Our **facilities department** designed a new campus cafeteria to provide a more welcoming and comfortable area for students to sip their 'cortaditos' and eat their meals - socially distanced of course!

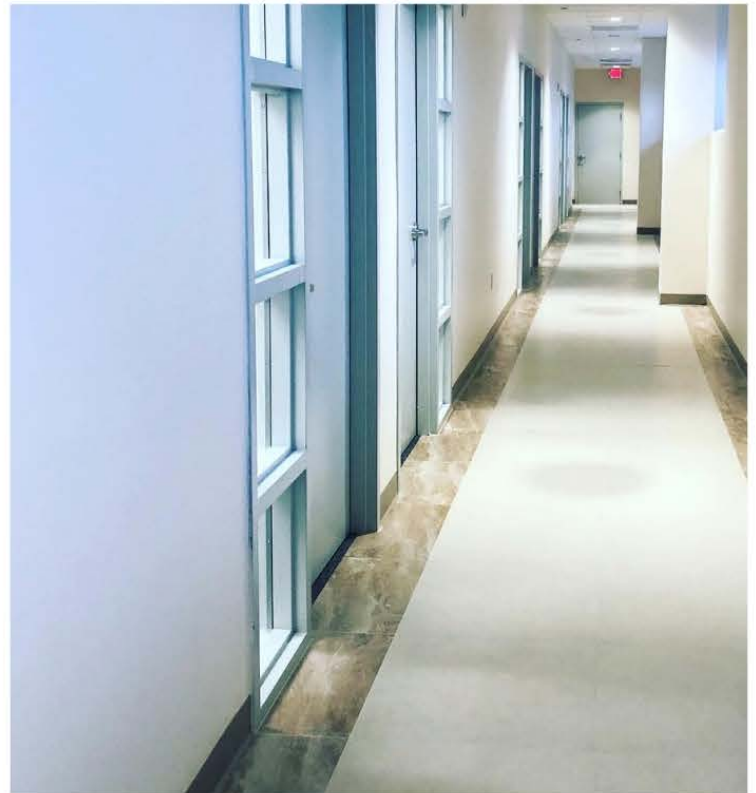


Miami Campus Updates



New Study Spaces

Student Affairs with the **Title V DHSI Grant** developed new study spaces for students. Our **Student Success Center** is now available to use. Currently there is limited capacity due to Covid-19. Bring your own device or use campus-based technology. These are open study areas designed for student comfort and easy access. FYI - the **Tutoring Center** received a face lift and has been moved to the 2nd floor. There are 3 designated study rooms available for students. Email escampos@albizu.edu to reserve a room.

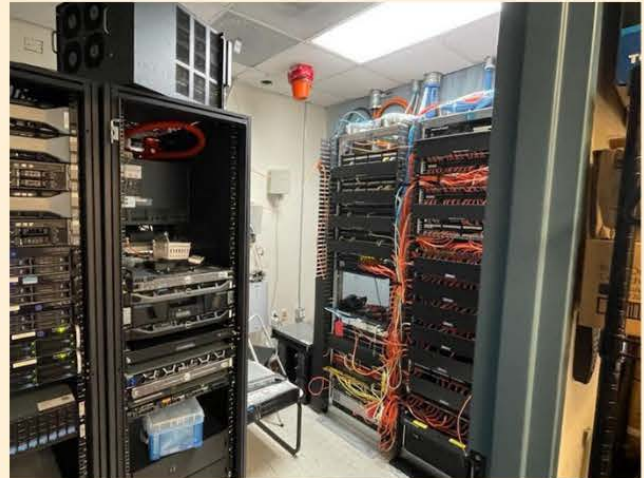


Miami Campus Updates



Library Upgrades

Our **Library Services** are both on site and virtual. If you come to campus you will notice our newly installed rugs! Private rooms for study are available, email aumiamilibrary@albizu.edu to reserve a study room.



EPPP Study Room and Tech Upgrades

Chancellery, PsyD, and Information Technology (IT) collaborated to bring our PsyD students the EPPP Study Room. **IT** has also doubled our internet bandwidth to provide faster browsing. Upgrades to our technology will deliver a more stable and secure network. Students will have a better wifi experience when on campus!

Miami Campus Updates



- **Ed Tech** has been busy recording lectures for our online and hybrid courses at our instructional design studio. You may run into the Ed Tech staff on the 2nd floor!
- **IT** has redesigned several classrooms for hybrid activities. Some professors have been broadcasting their lectures live from our campus.
- The **B.S. in Psychology** is now offered fully online. A minor in Applied Behavior Analysis has been added as an option. Soon we will launch a minor in Speech and Language Pathology for the B.S.
- A new **MBA** in Healthcare Management will be offered in the Spring of 2022. This creates fresh opportunities for new and current students!
- The **PsyD** program is offering evening courses to benefit working students.
- The **PhD in Human Services** curriculum was modified to 57 credits and an early start on the dissertation phase.

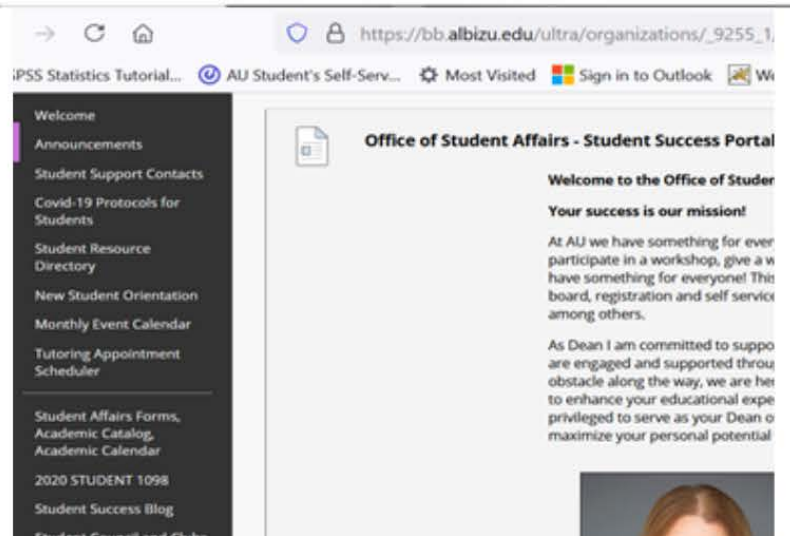
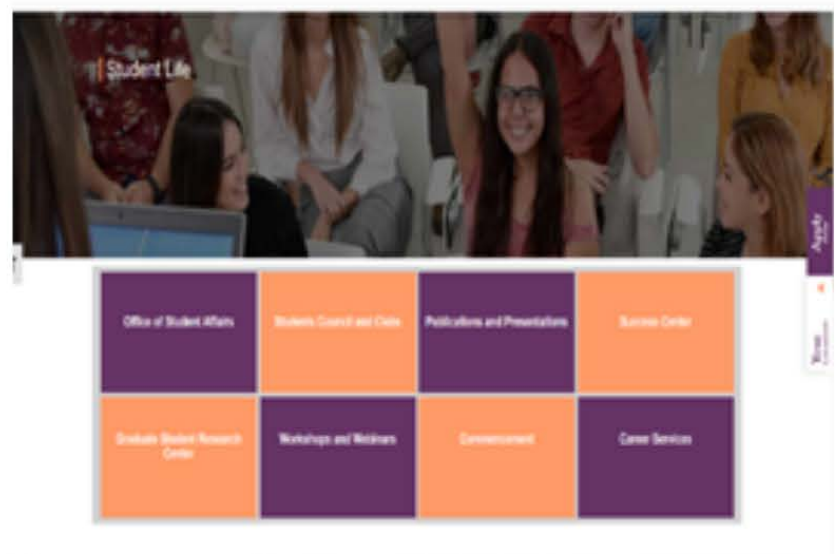


Miami Digital Spaces Updates

Campus leadership and staff have created digital spaces where information is accessible to our student body – Albizu Magazine, Student Life Site, and the Student Success Portal are among the resources you have at your fingertips.

We have developed several means of communication and information sharing to keep you apprised of events, deadlines, information, and resources available.

The next page offers several information related links for our student body to stay connected. You should bookmark them!



Miami Campus - Connection Links

Albizu Website: <https://www.albizu.edu/miami/>

Albizu Digital Events Calendar:
<https://www.albizu.edu/events-calendar/>

Albizu Student Affairs Infocentral Site:
<https://infocentral.albizu.edu/miami-campus/office-of-student-affairs/>

Office of Student Affairs Webpage:
<https://www.albizu.edu/miami/miami-student-life/>

Student Success Portal (log into Blackboard to access):
https://bb.albizu.edu/ultra/organizations/_92551/cl/outline

Self Service: <https://selfserv.albizu.edu/Student/Account/Login>

Albizu Magazine: <https://magazine.albizu.edu/>

Tutoring Digital Scheduler: <https://www.picktime.com/albizututoring>

Graduate Student Research Center Digital Scheduler:
<https://www.picktime.com/albizugraduatecenter>

Weekly Emails from the Office of Student Affairs Office with Events,
Links, and Resources

Text Reminders with Event Invitations, Notifications, and Links

Follow Albizu University on Social Media

Instagram: @albizumia and @albizustudents

Facebook: Albizu University Miami Campus

Facebook: Albizu Alumni

Miami Campus - Scholarships and Grants

- The **Master's in Psychology department** congratulates the 2020-2021 cohort of 29 students receiving specialized training and \$10,000 stipends while completing their field placements in integrated behavioral healthcare settings in our community under the Behavioral Health Workforce Education and Training (BHWET) Integrated Training for Healthier Communities (ICHC) HRSA-grant (2017-2021) project.
- The **Title V PPOHA Graduate Grant** annually awards between 8-20 Fellowships in the amount of \$5,000 to eligible applicants enrolled in a graduate program. To maintain eligibility to receive the Fellowship, applicants must have a GPA of 3.25 or above, continue to meet the academic requirements, demonstrate satisfactory academic progress as outlined in the Albizu University Academic Catalog, and have completed a FAFSA for the academic year. Required documentation submitted with the application includes two faculty recommendations, university transcripts, anticipated semester schedule, and a 500-word personal essay. This opportunity is available in May of each year.

Miami Campus Faculty Grants

Albizu University (AU) received funding from the **Florida Department of Health, Ed and Ethel Moore Alzheimer's disease program** for \$250,000. This grant provides funding for a research study, led by **Dr. Miriam Jocelyn Rodriguez**, focused on understanding factors that are unique contributors to the development of Alzheimer's disease (AD) among Hispanic older adults. The funding provides stipends for two graduate doctoral level student research assistants. The primary objective is to compare functional measures that can effectively identify AD risk factors at the earliest stages of the disease among Hispanic and white non-Hispanic participants in the 1Florida Alzheimer's Disease Research Center (ADRC), a multi-site research center funded by the National Institute on Aging (NIA). The 1Florida ADRC and AU have collaborated for several years, especially with respect to cross-cultural studies, including cognitive measures and AD biomarkers among Hispanic and non-Hispanic participants.

The current study will utilize data that was previously collected by the 1Florida ADRC on AD biomarkers including MRI, PET scan, and genetic markers. Dr. Rodriguez and her students will collect new information on functional symptoms as defined by activities of daily living (ADLs) and instrumental activities of daily living (IADLs) among 1Florida ADRC participants. Responses to measures of these functional symptoms will be incorporated with previously collected biomarker data to identify existing correlations among Hispanic and white non-Hispanic participants. Furthermore, the effectiveness of these measures in identifying dementia diagnoses will be examined.

Results of the study will be an important contribution to understanding the effect of biomarkers, cognition, and ADL and IADL function among multiethnic groups. Our study will help identify effective functional measures that can be used among Hispanics to diagnose and evaluate functional progression in AD and other dementias, especially in the prodromal stages when treatment can be most effective.

Faculty Grants continued

Integrated OUD and SUD Training Program in South Florida: A Capacity Building Project in Clinical Psychology HRSA 1 D4OHP33382-01-00 **Project Director: Scott M. Hyman, Ph.D.**

Albizu University is expanding the training of PsyD students in Miami by establishing a specialized training track on Opioid and Substance Use Disorders (OUD and SUD) prevention and treatment. The purpose of the project is to develop the OUD/SUD-specific training plan and expand the practicum training positions to enable six doctoral psychology (PsyD) students (2 students per year over three years) to develop skills in the provision of culturally competent, evidence-based screening, evaluation, and treatment of OUD/SUD in integrated behavioral health care settings. The project is organized around the development of OUD/SUD treatment core competencies under the mentorship of AU's faculty experts and enriched by the experiential training from a year-long practicum rotation at a community-based partner: Borinquen Medical Centers, a Federally Qualified Health Center providing high-quality primary medical care and behavioral health services to nearly 50,000 low-income medically underserved individuals in Miami-Dade County. The overall goal of the project is to train a cadre of doctoral level clinicians (PsyD.) to practice on the frontlines of the opioid crisis.

The OUD/SUD Training Program at Albizu University is supported by the Health Resources and Services Administration (HRSA) of the U.S. Department of Health and Human Services (HHS) as part of an award totaling \$133,904 with 16% financed from nongovernmental sources. The contents are those of the author(s) and do not necessarily represent the official views of, nor an endorsement, by HRSA, HHS or the U.S. Government.

Faculty Grants continued

Miami Mental Health Awareness Initiative

A community-academic partnership for raising mental health awareness in Miami-Dade County Schools

Principal Investigator: Yamila Lezcano, LMHC, Assistant Professor

Undergraduate Psychology and Education Programs

Funding: \$125,000 per year for 3 years.

- The Miami Mental Health Awareness Initiative (MMHA) is a comprehensive multitier approach that is providing Youth Mental Health First Aid Training to 750 school personnel and 30 college student Education majors over a three-year grant period. Funded by the Substance Abuse and Mental Health services Administration (SAMSHA), this program aims to train 260 participants per year, including new and existing educators working with youth 12-18 years old from Miami-Dade County Schools, mainly in the North and South sections of the county with a larger concentration of Latino or Hispanic residents and low-income families with no health insurance. The primary focus of this training is to help school personnel identify risk factors and warning signs associated with mental health problems commonly experienced by transition-age youth. In addition, this training will provide participants with the knowledge to recognize symptoms indicative of serious mental illness (SMI), and serious emotional disturbance (SED). Individuals also learn about crisis de-escalation techniques and available mental health resources in the community, including Carlos Albizu University's in-house training clinic, the Goodman Psychological Services Center.
- The Youth Mental Health First Aid trainings began in July 2020. Since the beginning of the project, a total of 420 participants from instructional and non-instructional school personnel (45 schools) from Miami-Dade County Public Schools have been trained.